



YOUR COMPLETE AIR DISTRIBUTION
PROVIDER OF GRILLES, REGISTERS,
DIFFUSERS, AND TERMINAL UNITS.

Products for Sustainable Buildings:



Going Green with Krueger

Krueger is committed to providing you with green solutions that promote energy efficient and sustainable HVAC designs. Our GreenTouch Initiative includes continually improving existing designs, pursuing more environmentally responsible product innovation, and reducing energy consumption in our plants and facilities. By integrating Krueger green air distribution solutions, you not only benefit through LEED credits and savings, but are also helping to preserve our environment for future generations.

GreenTouch
Initiative



This icon signifies an opportunity to earn LEED points.

Additional Product Information:



Product Catalog

For detailed product information that includes engineering and application information, as well as product dimensional data, performance information, engineering specifications and more, contact your local Krueger representative to request a copy of Krueger's latest Product Catalog.



www.Krueger-HVAC.com

The Krueger website has a wealth of information that extends beyond the pages of this handbook or Product Catalog. Whether you are looking for the latest product releases, general product information, white papers, or electronic tools, you can find it all very quickly and easily at www.krueger-hvac.com.



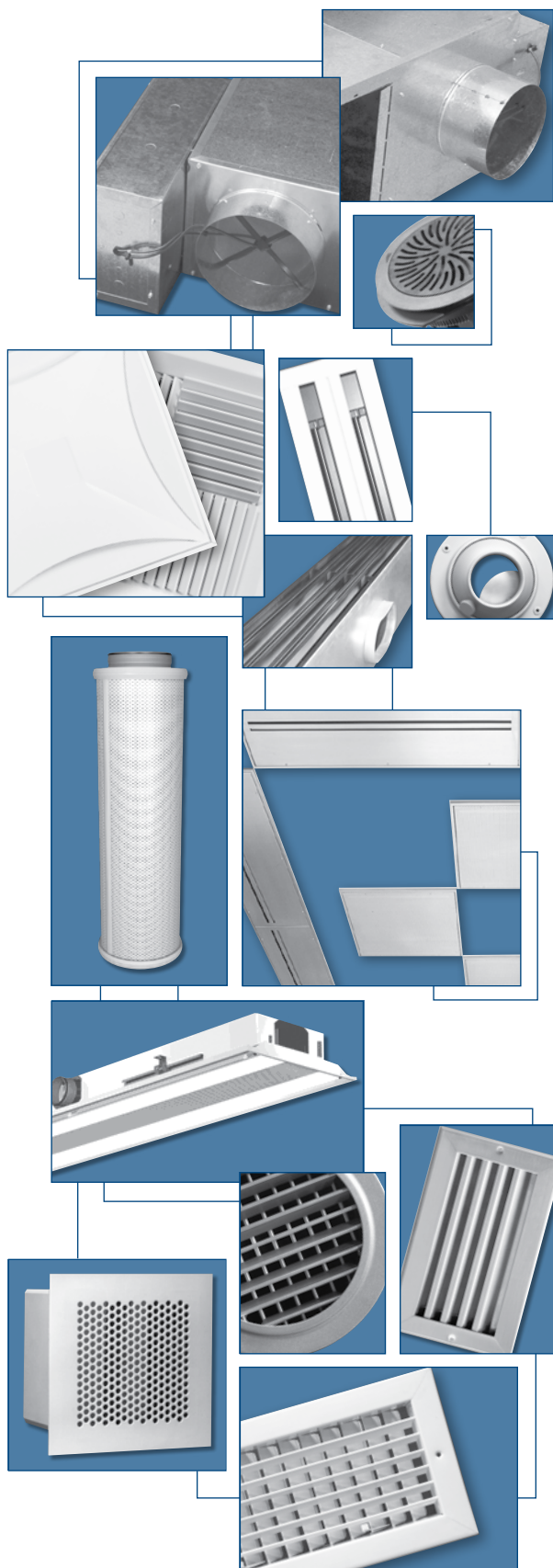
Selection Software

Krueger is proud to provide the most robust selection software in the industry for terminal units as well as air distribution products (grilles, registers, and diffusers). Having incorporated several powerful engineering tools, Krueger's software will save significant time in the design of a building's HVAC system. Simply download it from the Krueger website.



Copyright ©2010 Krueger. All rights reserved.

Krueger is committed to continuous improvement and reserves the right to make changes at any time, without notice, to models, construction, specifications, options, etc. To view the latest updates, visit Krueger at www.krueger-hvac.com.

Krueger Product Offering

Terminal Units

<i>Single Duct Terminal Units</i>	2
<i>Dual Duct Terminal Units</i>	2
<i>Fan Powered Terminal Units</i>	2
<i>Retrofit & Bypass Terminal Units</i>	3

Raised Floor Products 4
Diffusers

<i>Architectural/Plaque Ceiling Diffusers</i>	5
<i>Louvered Face Ceiling Diffusers</i>	6
<i>Perforated Ceiling Diffusers</i>	8
<i>Modular Core Ceiling Diffusers</i>	9
<i>Linear Slot Ceiling Diffusers</i>	10
<i>Plenum Slot Diffusers</i>	11
<i>Round Ceiling Diffusers</i>	12
<i>Air Nozzles</i>	14

Special Products

<i>Critical Room Solutions</i>	17
<i>Displacement Ventilation</i>	19
<i>Chilled Beams</i>	20

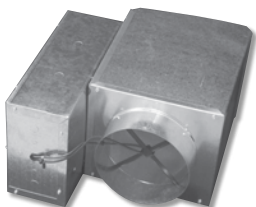
Grilles & Registers

<i>Supply Grilles & Registers</i>	22
<i>Return Grilles & Registers</i>	24
<i>Linear Bar Grilles</i>	26
<i>Security Grilles</i>	27
<i>Industrial Grilles</i>	28
<i>Duct Mounted Grilles</i>	29
<i>Transfer Grilles</i>	30
<i>Stainless Steel Grilles & Diffusers</i>	30

Standard Paint Selection 32

Single Duct, Dual Duct, & Fan Powered Terminal Units

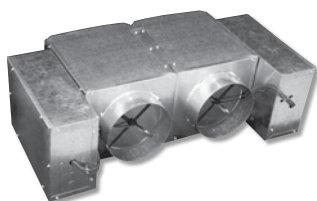
LMHS: Single Duct Terminal Unit



- 22 Gage Construction (Optional 20 Gage)
- Dual Density Liner (Optional Foil Faced, Dual Wall, & Fiberglass Free “Cellular” Liner)
- Pneumatic, Analog Electronic, or Direct Digital Controls (By Others)
- Hot Water, Electric Heat, or LineaHeat™ Solid State Proportional Electric Heat Available
- Round Inlet Sizes: 4” - 16”; Rectangular Inlet Sizes: 16”x24” and 8”x13 ½”
- Airflow Capacities: Up to 7000 CFM
- Low Profile and Exhaust Unit Construction Available
- AHRI Listed; Meets NFPA 90A and UL 181 Requirements



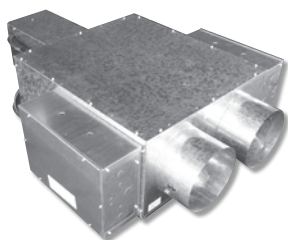
LMHD: Dual Duct Terminal Unit



- 22 Gage Construction (Optional 20 Gage)
- Applicable When Blending of Hot and Cold Air is Not Required
- Dual Density Liner (Optional Foil Faced, Dual Wall, & Fiberglass Free “Cellular” Liner)
- Pneumatic, Analog Electronic, or Direct Digital Controls (By Others)
- Round Inlet Sizes: 4” - 16” (Hot and Cold Inlet Sizes Must Be Equal)
- Rectangular Inlet Size: 16”x24” (Hot and Cold Inlet Sizes Must Be Equal)
- Airflow Capacities: Up to 7000 CFM (Per Inlet)
- AHRI Listed; Meets NFPA 90A and UL 181 Requirements



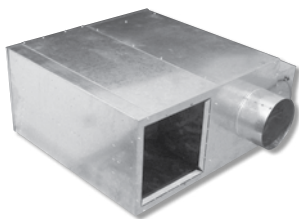
LMHDT: Dual Duct Terminal Unit



- 22 Gage Construction with Integral Attenuator and Mixing Baffle (Optional 20 Gage)
- Dual Density Liner (Optional Foil Faced, Dual Wall, & Fiberglass Free “Cellular” Liner)
- Pneumatic, Analog Electronic, or Direct Digital Controls (By Others)
- Round Inlet Sizes: 6” - 16” (Hot Inlet Size Does Not Have To Equal Cold Inlet Size)
- 20:1 Temperature Mixing Ratio
- Discharge Airflow Capacities: Up to 5235 CFM
- AHRI Listed; Meets NFPA 90A and UL 181 Requirements



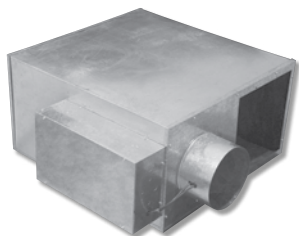
KQFS (Constant Volume) & KQFP (Variable Volume): Quiet Fan Powered Terminal Units



- 20 Gage Construction with Removable Bottom Service Panel
- Dual Density Liner (Optional Foil Faced, Dual Wall, & Fiberglass Free “Cellular” Liner)
- Pneumatic, Analog Electronic, or Direct Digital Controls (By Others)
- Hot Water, Electric Heat, or LineaHeat™ Solid State Proportional Electric Heat Available
- Round Inlet Sizes: 6” - 16”
- Multi-voltage PSC Fan Motor with Electronic Speed Control (Optional ECM Motor Available)
- Airflow Capacities: KQFS Up to 3000 CFM; KQFP Up to 3660 CFM
- AHRI and ETL Listed; Meets NFPA 90A and UL 181 Requirements



QFC (Constant Volume) & QFV (Variable Volume): Standard Fan Powered Terminal Units

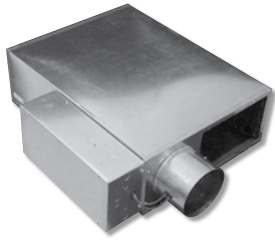


- 22 Gage Construction with Removable Bottom Service Panel (Optional 20 Gage)
- Dual Density Liner (Optional Foil Faced & Fiberglass Free “Cellular” Liner)
- Pneumatic, Analog Electronic, or Direct Digital Controls (By Others)
- Hot Water, Electric Heat, or LineaHeat™ Solid State Proportional Electric Heat Available
- Round Inlet Sizes: 6” - 16”
- Airflow Capacities: Up to 3660 CFM
- Multi-voltage PSC Fan Motor with Electronic Speed Control (Optional ECM Motor on QFC)
- AHRI and ETL Listed; Meets NFPA 90A and UL 181 Requirements



Fan Powered & Retrofit Terminal Units

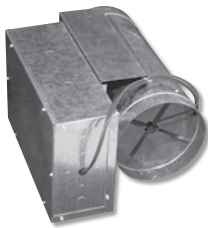
KLPS (Constant Volume) & KLPP (Variable Volume): Low Profile Fan Powered Terminal Units



- 20 Gage Construction with Removable Bottom Service Panel
- Dual Density Liner (Optional Foil Faced & Fiberglass Free “Cellular” Liner)
- Pneumatic, Analog Electronic, or Direct Digital Controls (By Others)
- Hot Water, Electric Heat, or LineaHeat™ Solid State Proportional Electric Heat Available
- Airflow Capacities: KLPS Up to 1970 CFM; KLPP Up to 2060 CFM
- PSC Fan Motor with Electronic Speed Control (Optional ECM Motor Available)
- AHRI and ETL Listed; Meets NFPA 90A and UL 181 Requirements

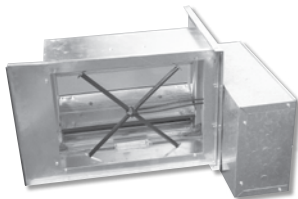


RVE: Retrofit and/or Laboratory Exhaust Terminal Unit



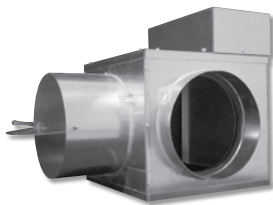
- 22 Gage Construction (Optional 20 Gage and/or Stainless Steel)
- Pneumatic, Analog Electronic, or Direct Digital Controls (By Others)
- Round Inlet and Outlet Sizes: 4” - 16”
- Airflow Capacities: Up to 3660 CFM
- Tested in Accordance to AHRI Standard 880

SVE: Slip-In Retrofit Terminal Unit



- 22 Gage Construction
- Multi-blade Control Damper
- Pneumatic, Analog Electronic, Electric, or Digital Controls (By Others)
- Unit Sized to Slide Into Most Square and Rectangular Ducts
- Gasketed Orifice Plate and Mounting Plate
- Airflow Capacities: Up to 14500 CFM
- Tested in Accordance to AHRI Standard 880

KLBB: Bypass Terminal Unit



- 20 Gage Construction
- Dual Density Fiberglass Liner
- Pressure Dependent Pneumatic or Electric Controls
- Round Inlet, Outlet, and Bypass Sizes: 6” - 18” (Optional Manual Damper)
- Airflow Capacities: Up to 4400 CFM
- Tested in Accordance to AHRI Standard 880
- Meets NFPA 90A and UL 181 Requirements

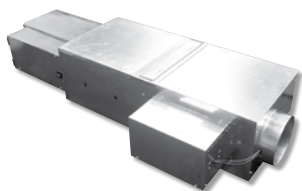
KMS: Retrofit In-line Measuring Station



- 22 Gage Construction (Optional 20 Gage and/or Stainless Steel)
- Round Duct Sizes: 4” - 16”
- Linear or Four Quadrant Center Averaging Airflow Sensor
- Airflow Capacities from 40 to 3660 CFM

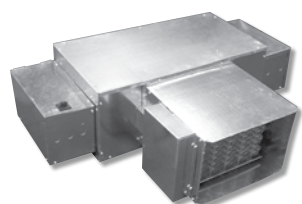
Raised Floor Products

KUFS: Raised Floor Series Fan Powered Terminal Unit



- 20 Gage Construction with Removable Top Service Panel
- Applicable in 24"x24" Raised Floor Grid Systems
- Dual Density Liner (Optional Foil Faced or "Cellular" Liner)
- Analog Electronic or Direct Digital Controls (By Others)
- Hot Water or Electric Heat Available
- PSC Fan Motor with Electronic Speed Control (Optional ECM Motor Available)
- Unit Height: 10 1/2" or 14 1/8"; Round Inlet Sizes: 9" or 10"; Airflow Capacities: Up to 1200 CFM
- ETL Listed; Meets NFPA 90A and UL 181 Requirements
- Tested in Accordance to AHRI Standard 880

KBF: Raised Floor Booster Fan Powered Terminal Unit



- 20 Gage Construction with Removable Top Service Panel
- Applicable in 24"x24" Raised Floor Grid Systems
- Unit Height: 14" or 16"
- Direct Digital Controls (By Others)
- Hot Water or Electric Heat Available
- PSC Fan Motor with Electronic Speed Control (Optional ECM Motor Available)
- Airflow Capacities: Up to 2800 CFM
- ETL Listed
- Tested in Accordance to AHRI Standard 880


KUFM: Underfloor-Mixing Fan Powered Terminal Unit



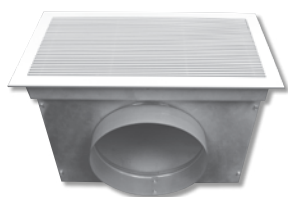
- 20 Gage Construction with Removable Service Panel
- Dual Density Liner (Optional Foil Faced, Dual Wall, & Fiberglass Free "Cellular" Liner)
- Direct Digital Controls (By Others)
- ECM Motor
- Round Inlet Sizes: 6" - 16"
- Airflow Capacities: Up to 6200 CFM
- ETL Listed; Meets NFPA 90 and UL 181 Requirements
- Tested in Accordance to AHRI Standard 880

FPD-R, FPDFR-R, & FPD-B: Helical Diffusers for Raised Floor Systems



- Removable, Curved Slot Core (Optional Electric Actuator)
- External Damper Indicator Coupled with Internal Damper Stop
- Extra Wide Trim Ring Flange Prevents Carpet from Pulling Away from Diffuser
- Diffusers May Be Installed After Flooring and Carpet Installation Are Complete
- Standard Finish: Black or Gray (Custom Colors Available)
- High-impact Polycarbonate Construction Meets NFPA 90B Structural Requirements for Floor Diffusers
- Model FPDFR-R (Fire Rated) is UL Listed and Meets NFPA 90A Requirements 
- Model FPD-B (22 Gage Steel Plenum) Features Dual Inlets for Heating/Cooling Applications

FPD-D, FPD-V, & FPD-HC: Linear Diffuser Plenum for Raised Floor Systems



- Model FPD-D Features a 9" Inlet
- Model FPD-V Features a Close-off Damper (Optional 24 Volt Actuator)
- Model FPD-HC Features Dual Inlets for Heating/Cooling Applications
- 22 Gage Galvanized Steel Plenum Construction
- Designed for Field Attachment to 1850 Linear Bar Grille Series

Architectural/Plaque Ceiling Diffusers

PRISM: Arcuate Face Architectural Ceiling Diffuser



- Steel Construction
- One-piece Arcuate Face Plate, Hinged and Removable from One-piece Backpan
- Nine Standard Center Appliqué Colors (Custom Colors & Logo Screening Available)
- Diffuser Available without Center Appliqué
- Prism Face Sold Separately for Retrofit of Most Snap-in Style Perforated Diffusers
- Various Frame Styles Available
- Inlet Type: Round or Square
- Panel Size: 24"x24"
- Standard Finish: British White

PLQ, 5PLQ, & PLQR: Plaque Face Architectural Ceiling Diffuser

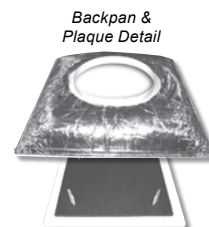


- Steel (PLQ/PLQR) or Aluminum (5PLQ) Construction
- Square (PLQ/5PLQ) or Round (PLQR) Face Plate
- One-piece, Non-folded, 16 Gage Material Attached to a One-piece Stamped Backpan (PLQ/PLQR)
- Various Frame Styles Available
- Round Inlet Sizes: 6", 7", and 8" (12"x12" Panel Size, PLQ & PLQR Only)
- Round Inlet Sizes: 6", 8", 10", 12", 14", and 15" (24"x24" Panel Size)
- Standard Finish: British White

PLQLT: Plaque Face Diffuser for Low Temperature Applications



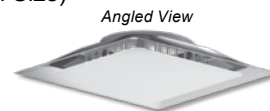
- Steel Construction
- R6 Rigid Fiberglass Insulated Backpan
- One-piece, Non-folded, Square Face Plate with 3/8" Insulation
- Plaque Attaches to a One-piece, Stamped Backpan by Hooks
- Various Frame Styles Available
- Round Inlet Sizes: 6", 8", 10", 12", 14", and 15" (24"x24" Panel Size)
- Standard Finish: British White



PLQIMP: Plaque Face Diffuser with Integrated Multi-port Induction Ring



- Steel Construction
- One-piece, Non-folded, Square Face Plate with Integrated Multi-port Induction Ring
- Plaque Attaches to a One-piece, Stamped Backpan by Hooks
- Various Frame Styles Available
- Round Inlet Sizes: 6", 8", 10", 12", 14", and 15" (For 24"x24" Panel Size)
- Standard Finish: British White



VPQ: Square Plaque VAV Diffuser with Analog or Thermal Control



- Steel Construction
- One-piece, Non-folded, Square Face
- Plaque Face Attaches to One-piece, Stamped Backpan
- Various Frame Styles Available
- Available with Electronic Analog Control, Thermal VAV Control, or No Control
- Round Inlet Sizes: 6", 8", 10", and 12"
- "Black Heat" Option Available on Electronic Analog Control Units
- Standard Finish: British White



Architectural & Louvered Face Ceiling Diffusers


KSD: Krueger Swirl Diffuser



- Aluminum Construction
- For Use in Lay-in T-bar Applications
- High Capacity Airflow
- Promotes Room Air Mixing
- Aesthetically Pleasing Appearance
- Standard Finish: British White

1400, 51400, 1400FR, M1400, M51400, 1400A, & 51400A: Four-cone Drop Face Louvered Diffuser



- Steel (1400/1400FR/M1400/1400A) or Aluminum (51400/M51400/51400A) Construction
- Available with Horizontal to Vertical Discharge Air Adjustment (1400A/51400A)
- Available with UL Listed Fire Damper Meeting NFPA 90A Requirements (1400FR) 
- Various Frame Styles Available
- Inlet Type: Round
- Discharge Air Pattern: 4-way
- Panel Sizes: 12"x12", 24"x24", and 24"x48"
- Available with Hard Metric Lay-in Panels 600x600 and 300x300mm (M1400/M51400)
- Standard Finish: British White


1450, 51450, M1450, M51450, 1450A, & 51450A: Three-cone Drop Face Louvered Diffuser



- Steel (1450/M1450/1450A) or Aluminum (51450/M51450/51450A) Construction
- Available with Horizontal to Vertical Discharge Air Adjustment (1450A/51450A)
- Various Frame Styles Available
- Inlet Type: Round
- Discharge Air Pattern: 4-way
- Panel Sizes: 12"x12", 24"x24", and 24"x48"
- Available with Hard Metric Lay-in Panels 600x600 and 300x300mm (M1450/M51450)
- Standard Finish: British White

SH, 5SH, SHR, 5SHR, SHFR, & MSH: Square/Rectangular Flush Face Louvered Diffuser



- Steel (SH/SHR/SHFR/MSH) or Aluminum (5SH/5SHR) Construction
- Available with UL Listed Fire Damper Meeting NFPA 90A Requirements (SHFR) 
- Core is Removable from Face of Diffuser
- Various Frame Styles and Panel Sizes Available
- Inlet Sizes: 6"x6" to 48"x48" in 3" Increments
- Available with Round Inlet (SHR/5SHR); Factory Mounted Square to Round Adapter
- Available with Hard Metric Lay-in Panel 600x600mm (MSH)
- Standard Finish: British White
- Optional: Ultra-throw, Straightening Grids, and Dampers

SHV, 5SHV, SHRV, & 5SHRV: Square/Rectangular Flush Face Louvered Diffuser with Deflector Vanes



Back Detail

- Steel (SHV/SHRV) or Aluminum (5SHV/5SHRV) Construction
- Core is Removable from Face of Diffuser
- Various Frame Styles and Panel Sizes Available
- Inlet Sizes: 6"x6" to 48"x48" in 3" Increments (36"x36" Maximum for 5SHV)
- Available with Round Inlet (SHRV/5SHRV); Factory Mounted Square to Round Adapter
- Standard Finish: British White
- Optional: Straightening Grid and Dampers

Louvered Face Ceiling Diffusers

SHPC, 5SHPC, SHPCR, & 5SHPCR: Square/Rectangular Flush Face Louvered Diffuser with Pattern Controllers



- Steel (SHPC/SHPCR) or Aluminum (5SHPC/5SHPCR) Construction
- Core is Removable from Face of Diffuser
- Various Frame Styles and Panel Sizes Available
- Pattern Controllers are Standard and Field Adjustable
- Square Inlet Sizes: 6"x6" to 21"x21" (Surface Mount) or 18"x18" (Lay-in) in 3" Increments
- Available with Round Inlet (SHPCR/5SHPCR)
- Standard Finish: British White
- Optional: Straightening Grid and Dampers

SHFB & 5SHFB: Square/Rectangular Flush Face Louvered Diffuser with Rigid Fiberglass Backpan



Back Detail

- Steel (SHFB) or Aluminum (5SHFB) Construction
- Core is Removable from Face of Diffuser
- Pre-scored Backpan for Neck Sizes: 6" - 16"
- Frame Style: Frame 23, for Lay-in T-bar Ceiling Systems
- Panel Size: 24"x24"
- Standard Finish: British White

5SH/CAD & 5SHR/CAD: Cold Isle Diffuser



- Aluminum Construction
- Core is Removable from Face of Diffuser
- Center Downblow Adjustable by Supplied Aluminum OBD
- Available with Square Inlet (5SH/CAD) or Round Inlet (5SHR/CAD)
- Frame Style: Frame 23, for Lay-in T-bar Ceiling Systems
- Pattern Controllers are Standard and Field Adjustable
- Panel Size: 24"x24"
- Standard Finish: British White

SHRPLQ: Louvered Diffuser with Center Plaque



- Steel Construction
- Core is Removable from Face of Diffuser
- Available in 1, 2, or 3 Slots
- Round Duct Connections
- Panel Size: 24"x24"
- Standard Finish: British White
- Optional: Straightening Grid and Round Damper

7000: Combination Supply/Return Diffuser



- Aluminum Construction
- Anti-sweat Gasket
- Egg-crate is 1/2" Square and Removable
- Standard Finish: Mill
- Optional: Plenum

Perforated Face Ceiling Diffusers

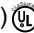
6100, 56100, 6150, & 56150: Perforated Face Diffuser



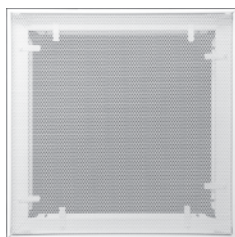
- Steel (6100/6150) or Aluminum (56100/56150) Face; Steel Backpan Construction
- One-piece, Stamped Core Rotates 45° to Obtain a 4-corner Discharge Air Pattern
- Hinged, Removable Face with 51% Perforated Open Area
- Various Frame Styles Available
- Round Inlet Sizes (6100/56100): 6", 8", 10", 12", 14", and 15"
- Square Inlet Sizes (6150/56150): 6"x6", 8"x8", and 10"x10"
- Panel Size: 24"x24"
- Standard Finish: British White
- Optional: Straightening Grid and Damper

6200, 6200FR, 56200, & 6290FR: Perforated Face Diffuser



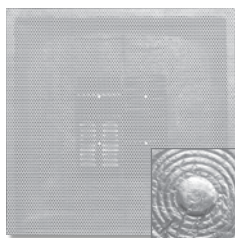
- Steel (6200/6200FR/6290FR) or Aluminum (56200) Face; Steel Backpan Construction
- Hinged, Removable Face with 51% Perforated Open Area
- Individually Adjustable Curved Blade Deflectors Mounted on Backpan
- Various Square Inlet Sizes Available
- Various Panel Sizes Available
- Available as UL Classified Fire Rated (6200FR/6290FR) 
- Standard Finish: British White
- Optional: Straightening Grid and OBD
- Matching Return with Square Inlet (6490/56490)

6290F: Perforated Face Return Diffuser with Filter Frame



- Steel Construction
- Hinged, Removable Face with 51% Perforated Open Area
- Uses Standard 20"x20"x1" Filter
- Various Frame Styles Available
- Square Inlet Size: 20"x20"
- Panel Size: 24"x24"
- Standard Finish: British White

6300 & 6390: Perforated Face Diffuser with Rigid Fiberglass Backpan




Back Detail

- Steel Construction
- Perforated Face with 51% Perforated Open Area
- Discharge Air Patterns: 4-way (Adjustable for 1, 2, and 3-way Patterns)
- Modular Pattern Deflectors Mounted on Back of Face
- Pre-scored Backpan for Round Inlet Sizes: 6" - 16"
- Panel Size: 24"x24" for Frame 23, Lay-in T-bar Ceiling Systems
- Standard Finish: British White Face with Black Deflectors and Black Backpan
- Matching Return without Pattern Deflectors (6390)

6400, 6400FR, 56400, 6490, & 56490: Perforated Face Diffuser




- Steel (6400/6490/6400FR) or Aluminum (56400/56490) Face; Steel Backpan Construction
- Hinged, Removable Face with 51% Perforated Open Area
- Discharge Air Patterns: 4-way (Adjustable for 1, 2, and 3-way Patterns)
- Modular Pattern Deflectors Mounted on Back of Face
- Various Panel, Module, and Square Inlet Sizes Available
- Available as UL Classified Fire Rated (6400FR) 
- Standard Finish: British White
- Optional: Straightening Grid and OBD
- Matching Return with Square Inlet (6490/56490)

Perforated Face & Modular Core Ceiling Diffusers


6500, 6500FR, 56500, & 6590FR: Perforated Face Diffuser



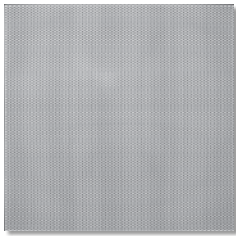
- Steel (6500/6500FR/6590FR) or Aluminum (56500) Face; Steel Backpan Construction
- Hinged, Removable Face with 51% Perforated Open Area
- Individually Adjustable Curved Blade Deflectors Mounted on Backpan
- Available as UL Classified Fire Rated (6500FR/6590FR) 
- Various Panel, Module, and Round Inlet Sizes Available
- Standard Finish: British White
- Optional: Straightening Grid and Round Dampers
- Matching Return with Round Inlet (6690/56690)

6600, 6600FR, 56600, 6690, & 56690: Perforated Face Diffuser



- Steel (6600/6690/6600FR) or Aluminum (56600/56690) Face; Steel Backpan Construction
- Hinged, Removable Face with 51% Perforated Open Area
- Available as UL Classified Fire Rated (6600FR) 
- Modular Pattern Deflectors Mounted on Back of Face
- Various Panel, Module, and Round Inlet Sizes Available
- Discharge Air Patterns: 4-way (Adjustable for 1, 2, and 3-way Patterns)
- Standard Finish: British White
- Optional: Straightening Grid and Round Dampers
- Matching Return with Round Inlet (6690/56690)

6790 & 56790: Perforated Diffuser - Face Only



- Steel (6790) or Aluminum (56790) Construction
- 51% Perforated Open Area
- Various Frame and Module Sizes Available
- Standard Finish: British White

1100, 51100, 1190, & 51190: Architectural Perforated Face Diffuser



- Aluminum Face and Aluminum Backpan (51100/51190) or Aluminum Face and Steel Backpan (1100/1190) Construction
- 51% Perforated Open Area Face with Extruded Aluminum Border
- Adjustable Curved Inlet Mounted Blades Offer Twelve Discharge Air Pattern Configurations
- Panel Sizes: 12"x12", 24"x24", 24"x12", and 48"x24"
- Standard Finish: British White
- Matching Return Available without Core Blades (1190/51190)

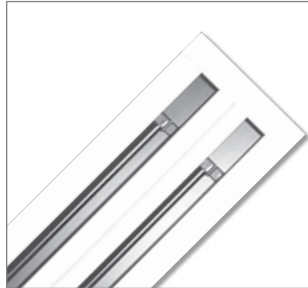
1240, 51240, 1240P, 51240P, & 1240PE: Modular Core Diffuser



- Steel (1240/1240P/1240PE) or Aluminum (51240/51240P) Construction
- Available with Perforated Face (1240P/51240P/1240PE)
- Snap-in, Modular Cores are Field Adjustable for 1, 2, 3, or 4-way Discharge Air Patterns
- Various Frame Styles and Panel Sizes Available
- Standard Finish: British White

Linear Slot Diffusers

DESIGNFLO®: Architectural Linear Slot Diffuser



- Extruded Aluminum Construction for Corrosion Resistance
- Integral Horizontal or Vertical Pattern Controllers Constructed on 24" Centers
- Number of Slots: 1 or 2; Slot Widths: 1", 1 ½", 2", 2 ½", and 3"
- Maximum Single Section Length: 12'
- Sections Can Be Joined for Continuous Runs and May Be Custom Curved
- Optional: Blank-off Strips (DFBO) to Blank-off Inactive Sections, Shipped Separately in 48" Sections that Can Be Field Cut to Length; 4-Legged Miter Cross (DFC), 3-Legged Mitered Tee (DFT), 2-Legged Mitered Corner (DFMC), Return Hood (DFRH), and Combination Linear Slot and Plenum Boot (DFB/DFNT)

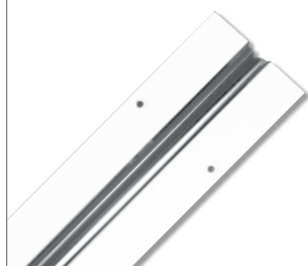
DFP: Plenum Boot for DesignFlo® Linear Slot Diffuser



Clip Detail

- Standard Sizes: 24", 36", 48", and 60"
- Inlet Sizes: 6", 8", 10", and 12" (Oval)
- Available with Optional Insulation and Optional Quadrant Damper

1900: Linear Slot Diffuser



- Extruded Aluminum Construction for Corrosion Resistance
- Adjustable, Removable Blades Snap Into Several Positions
- End Borders Available with Butt Cut, End Cap, or End Plate
- Various Frame Options Available
- Number of Slots: 1 to 8 (Dependent on Slot Width)
- Slot Widths: ½", ¾", 1", 1 ½", and 2"
- Maximum Single Section Length: 72"; Can Be Joined for Continuous Runs
- Standard Finish: British White Frame and Black Blades
- Optional: Mitered Corners and Custom Curving

1900BOOT: Plenum Boot for 1900 Linear Slot Diffuser



- Number of Slots: 1 to 8 (Dependent on Slot Width)
- Lengths: 24", 36", 48", 60", and 72"
- Inlet Sizes: 6", 8", 10", and 12" (Oval)
- Available with Internal Insulation
- Standard Finish: Mill
- Optional: Quadrant Damper and Performance Baffle

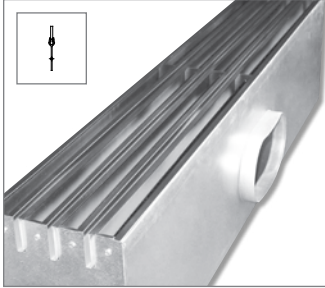
1900SQS, 1900SQR, & 1900SQSI: Square Supply/Return Linear Slot Diffuser



- Extruded Aluminum Diffuser with Steel Backpan Construction
- Adjustable for 1, 2, 3, or 4-way Discharge Air Patterns
- Ceiling Tile Supplied By Others
- Number of Slots: 1 to 4
- Slot Widths: ¾" or 1"
- Supply Available with Insulation (1900SQSI) or without Insulation (1900SQS)
- Standard Finish: British White with Black Blades
- Return Available with No Blades (1900SQR)

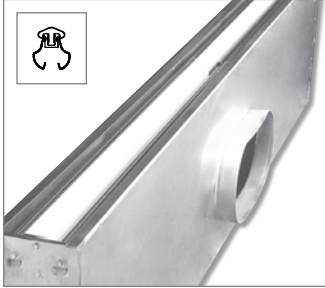
Plenum Slot Diffusers

PTBS: Plenum Slot Diffuser with an Adjustable Blade



- Adjustable, Gasketed Aluminum Blade
- Combination Slot Diffuser with Plenum for Lay-in T-bar Ceiling Systems
- Inlet Collar Drawn from Diffuser Plenum Wall Eliminates Leakage
- Number of Slots: 1 to 4
- Slot Widths: $\frac{3}{4}$ ", 1", and 1 $\frac{1}{2}$ "
- Lengths: 24", 36", 48", and 60"
- Available with Insulation
- Standard Finish: Black Face and Deflectors; Optional British White Center and Side T-bars
- Optional: Factory Installed T-bars and Plaster Frame

PTBA: Plenum Slot Diffuser with "Ice Tong" Blades



- Adjustable, "Ice Tong" Extruded Aluminum Blades
- Combination Slot Diffuser with Plenum for Lay-in T-bar Ceiling Systems
- Inlet Collar Drawn from Diffuser Plenum Wall Eliminates Leakage
- Number of Slots: 1 to 4
- Slot Widths: $\frac{3}{4}$ " and 1"
- Lengths: 24", 36", 48", and 60"
- Available with Insulation
- Standard Finish: Black Face and Deflectors; Optional British White Center and Side T-bars
- Optional: Factory Installed T-bars and Plaster Frame

PTBT: Plenum Slot Diffuser with Fixed Curved Blades



- Fixed Extruded Aluminum Curved Blades
- Inlet Collar Removable/Replaceable (ICPTBT)
- Number of Slots: 1 to 4 (1-way Deflection) or 2 to 4 (2-way Deflection)
- Lengths: 24", 36", 48", and 60"
- Available with Insulation
- Standard Finish: British White

PTBSS & PTBSSFB: Plenum Slot Diffuser with a Fixed Curved Blade



- Steel Curved Blades, Shipped Loose for Field Installation
- Inlet Collar Drawn from Diffuser Plenum Wall Eliminates Leakage
- Number of Slots: 1 or 2
- Slot Widths: 1" or 1 $\frac{1}{2}$ "
- Lengths: 24", 36", 48", and 60"
- Available with Factory Installed Blades (PTBSSFB)
- Available with Insulation
- Standard Finish: Black Face and Deflectors with Optional British White Center
- Optional: Factory Installed T-bars and Plaster Frame

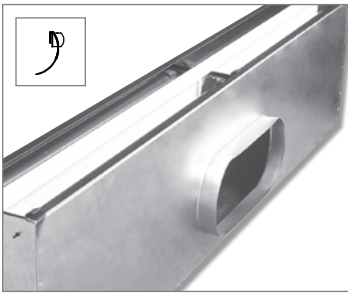
PTBR: Plenum Slot Return



- Steel Construction
- Return Airflow Control for Plenum Slot Supply Diffusers
- Designed for Non-ducted Return Air Systems
- Number of Slots: 1 to 4
- Slot Widths: $\frac{3}{4}$ ", 1", and 1 $\frac{1}{2}$ "
- Lengths: 24", 36", 48", and 60"
- Available with Insulation
- Standard Finish: Black Face; Optional British White Center and Side T-bars

Plenum Slot & Round Diffusers

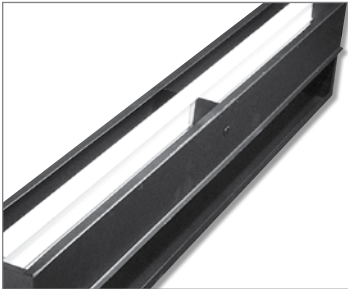
PFTBS: Plenum Slot Diffuser with Fire Damper



- Steel Construction
- UL Listed Fire Damper Meets Time vs. Temperature Test Criteria
- Meets NFPA 90A Requirements
- Slots: 1 or 2
- Slot Widths: $\frac{3}{4}$ ", 1", and 1 $\frac{1}{2}$ "
- Lengths: 24", 36", and 48"
- Center T-bar and Optional Side T-bars Furnished
- Available with Insulation
- Standard Finish: Black Face/Deflectors & British White Center/Side T-bars



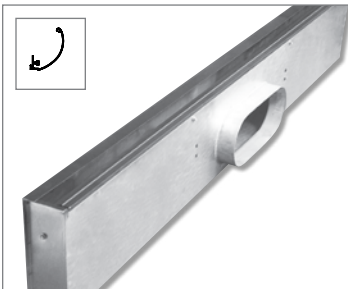
PFTBR: Plenum Slot Return with Fire Damper



- Steel Construction
- Return Airflow Control for Plenum Slot Supply Diffusers
- UL Listed Fire Damper Meets Time vs. Temperature Test Criteria
- Meets NFPA 90A Requirements
- Slots: 1 or 2
- Slot Widths: $\frac{3}{4}$ ", 1", and 1 $\frac{1}{2}$ "
- Lengths: 24", 36", and 48"
- Available with Insulation
- Standard Finish: Black Face with British White Center and Side T-bars

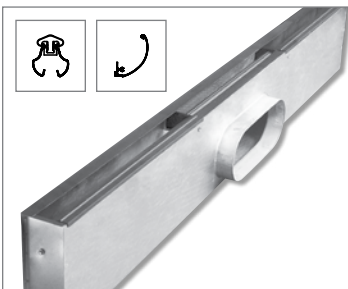
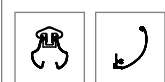


PTBSC & PTBSRC: Plenum Slot Diffuser



- 24 Gage Galvanized Steel Construction
- Fixed Horizontal Pattern Controller Provides Constant 1-way Airflow (In Direction of Inlet)
- Inlet Collar Drawn from Diffuser Plenum Wall Eliminates Leakage
- Lengths: 24", 36", 48", and 60"
- Available with External Insulation
- Standard Finish: Exposed Surfaces and Pattern Controllers are Black
- Optional: Non-ducted 2" Return Slot (PTBSRC)

PTBSCDB & PTBSRCDB: Plenum Slot Diffuser with Center Downblow



- 24 Gage Galvanized Steel Construction
- Fixed Horizontal Pattern Controller Provides Constant 1-way Airflow (In Direction of Inlet)
- Inlet Collar Drawn from Diffuser Plenum Wall Eliminates Leakage
- Lengths: 24", 36", 48", and 60"
- Downblow Section: 8" (For 24" Length Unit), 12", 15", and 18"
- Available with External Insulation
- Standard Finish: Exposed Surfaces and Pattern Controllers are Black
- Optional: Non-ducted 2" Return Slot (PTBSRCDB)

RM1 & 5RM1: 3-Cone Round Diffuser



- Steel (RM1) or Aluminum (5RM1) Construction
- 3-Cones
- 2-Position Adjustments
- 360° Discharge Air Pattern
- Duct Sizes: 6" - 36" (RM1); 6" - 18" (5RM1)
- Standard Finish: British White

Round Diffusers

RM2 & 5RM2: 4-Cone Round Diffuser



- Steel (RM2) or Aluminum (5RM2) Construction
- 4-Cones
- 3-Position Adjustments
- 360° Discharge Air Pattern
- Duct Sizes: 6" - 36" (RM2); 6" - 18" (5RM2)
- Standard Finish: British White

RM4 & 5RM4: 4-Cone Round Diffuser



- Steel (RM4) or Aluminum (5RM4) Construction
- Deep, One-piece Outer Cone Improves Anti-smudge Protection
- 4-Cones
- 3-Position Adjustments
- 360° Discharge Air Pattern
- Duct Sizes: 6" - 24" (RM4); 6" - 18" (5RM4)
- Standard Finish: British White

RA2: 4-Cone Adjustable Round Diffuser



- Steel Construction
- 4-Cones
- Infinitely Adjustable Horizontal to Vertical Discharge
- 360° Discharge Air Pattern
- Duct Sizes: 6" - 36"
- Standard Finish: British White

RA4: 4-Cone Adjustable Round Diffuser



- Steel Construction
- Deep, One-piece Outer Cone Improves Anti-smudge Protection
- 4-Cones
- Infinitely Adjustable Horizontal to Vertical Discharge
- 360° Discharge Air Pattern
- Duct Sizes: 6" - 24"
- Standard Finish: British White

RM2PLQ & RM4PLQ: Round Ceiling Diffuser with Center Plaque



- Steel Backpan and Aluminum Plaque Face (Core is Removable from Face of Diffuser)
- Deep, One-piece Outer Cone Improves Anti-smudge Protection (RM4PLQ)
- Horizontal and Vertical Air Distribution
- 360° Discharge Air Pattern
- Excellent Performance in Variable Air Volume Systems
- Designed for Exposed Duct or Hard Ceiling Applications
- Standard Finish: British White
- Optional: Straightening Grids and Round Damper

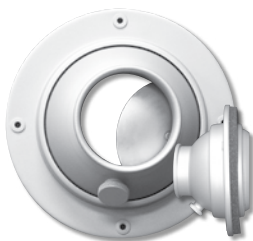
Round Diffusers & Air Nozzles

R1DBR10: Round Diffuser with Center Downblow



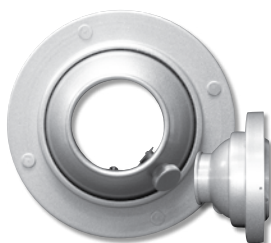
- Steel Construction
- Deep, One-piece Outer Cone Improves Anti-smudge Protection
- Ring Operator for Downblow Section Adjusted from Face of Diffuser
- 360° Discharge Air Pattern
- Duct Sizes: 10" - 36"
- Standard Finish: British White

RPN: Round Punkah Nozzle for Surface Mount



- Aluminum Construction
- For Use in Surface Mount Applications
- Foam Gasket and Mounting Screws Included
- Directional Air Pattern Control (70° Global Rotation)
- For Duct Sizes: 4" - 20" in 2" Increments
- Standard Finish: British White
- Optional: Aluminum Aperture Damper with Stainless Steel Hardware

RPNRD: Round Punkah Nozzle with Round Duct Adaptor



- Aluminum Construction
- For Use in Duct Mount Applications
- Foam Gasket and Mounting Screws Included
- Directional Air Pattern Control (70° Global Rotation)
- For Duct Sizes: 8" - 22" in 2" Increments
- Standard Finish: British White
- Optional: Aluminum Aperture Damper with Stainless Steel Hardware

RPNRR: Round Punkah Nozzle with Round Duct Reducer



- Aluminum Construction
- For Use in Stub Duct Applications
- Foam Gasket and Mounting Screws Included
- Directional Air Pattern Control (70° Global Rotation)
- For Duct Sizes: 6" - 20" in 2" Increments
- Standard Finish: British White
- Optional: Aluminum Aperture Damper with Stainless Steel Hardware

RPN2P & RPN4P: 2 or 4 Round Punkah Nozzles Mounted in a Panel



- Aluminum Construction
- For Use in Surface Mount Applications
- 2 Punkah Nozzles Mounted in a Panel (RPN2P)
- 4 Punkah Nozzles Mounted in a Panel (RPN4P)
- Foam Gasket and Mounting Screws Included
- Directional Air Pattern Control (70° Global Rotation)
- Standard Finish: British White
- Optional: Aluminum Aperture Damper with Stainless Steel Hardware

Air Nozzles

RPNLP: Single Round Punkah Nozzle Mounted in a Panel



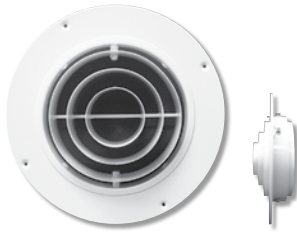
- Aluminum Construction
- For Use in Lay-in T-bar Applications
- Directional Air Pattern Control (70° Global Rotation)
- For Duct Sizes: 6" - 12" in 2" Increments
- Standard Finish: British White
- Optional: Aluminum Aperture Damper with Stainless Steel Hardware

KJET & KJETA: Nozzle Diffusers with or without Core



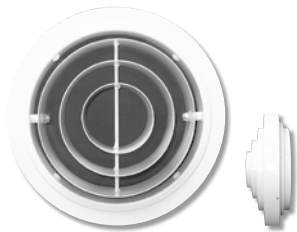
- Spun Aluminum Construction
- KJETA Concentric Rings are Steel Construction
- Model KJET Features a Supply Nozzle with Retaining Ring
- Model KJETA Features a Supply Nozzle with Retaining Ring and Adjustable Concentric Ring Core, Providing 60° of Adjustment
- Outlet Sizes: 3", 4", 5", and 6"
- Standard Finish: British White
- Optional: Countersunk Screw Holes in Outer Flange

CRN & 5CRN: Concentric Ring Nozzle for Surface Mount



- Steel (CRN) or Aluminum (5CRN) Construction
- Directional Air Pattern Control (60° Axial Adjustment with 360° of Rotation)
- Easy Finger Tip Adjustment
- For Use in Surface Mount Applications
- Standard Finish: British White

CRNRD & 5CRNRD: Concentric Ring Nozzle with Round Duct Adaptor



- Steel (CRNRD) or Aluminum (5CRNRD) Construction
- Directional Air Pattern Control (60° Axial Adjustment with 360° of Rotation)
- Easy Finger Tip Adjustment
- For Use in Duct Mount Applications
- Standard Finish: British White

CRNRR & 5CRNRR: Concentric Ring Nozzle with Round Duct Reducer



- Steel (CRNRR) or Aluminum (5CRNRR) Construction
- Directional Air Pattern Control (60° Axial Adjustment with 360° of Rotation)
- Easy Finger Tip Adjustment
- For Use in Duct Mount Applications
- Standard Finish: British White

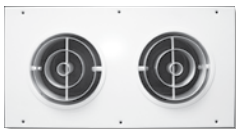
Air Nozzles & Round Grilles

CRNLP & 5CRNLP: Concentric Ring Nozzle for Lay-in Tee Bar



- Steel (CRNLP) or Aluminum (5CRNLP) Construction
- Directional Air Pattern Control (60° Axial Adjustment with 360° of Rotation)
- Easy Finger Tip Adjustment
- For Lay-in T-bar, 24"x24" Panel
- Standard Finish: British White

CRNP & 5CRNP: Concentric Ring Nozzle for Panel Mount



- Steel (CRNP) or Aluminum (5CRNP) Construction
- Directional Air Pattern Control (60° Axial Adjustment with 360° of Rotation)
- Easy Finger Tip Adjustment
- 1, 2, 3, or 4 Nozzles per Panel
- For Use in Surface Mount Applications
- Standard Finish: British White

R580 & R5880: Round Single/Double Deflection Grille for Concealed Mount



- Aluminum Construction
- Round Single (R580) or Double (R5880) Deflection Airfoil Blade Grille with 1" Blade Spacing
- Easy Finger Tip Adjustment
- For Use in Surface Mount Applications
- Concealed Mounting System Standard
- Aesthetically Pleasing Design
- Standard Finish: Silver Metallic

R580RD & R5880RD: Round Single/Double Deflection Grille with Round Duct Adaptor



- Aluminum Construction
- Round Single (R580RD) or Double (R5880RD) Deflection Airfoil Blade Grille with 1" Blade Spacing
- Easy Finger Tip Adjustment
- For Use in Exposed Duct Mount Applications
- Frame Slides Cleanly Over End of Exposed Duct
- Aesthetically Pleasing Design
- Standard Finish: Silver Metallic

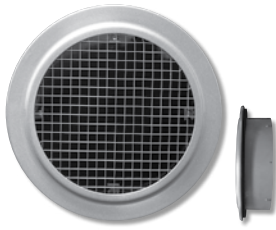
R580RR & R5880RR: Round Single/Double Deflection Grille with Round Duct Reducer



- Aluminum Construction
- Round Single (R580RR) or Double (R5880RR) Deflection Airfoil Blade Grille with 1" Blade Spacing
- Easy Finger Tip Adjustment
- For Use in Exposed Duct Mount Applications
- Frame Slides Cleanly Into End of Exposed Duct
- Aesthetically Pleasing Design
- Standard Finish: Silver Metallic

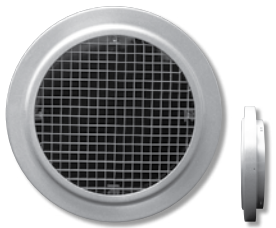
Round Grilles & Critical Room Solutions

REGC5: Round Egg-crate for Concealed Mount



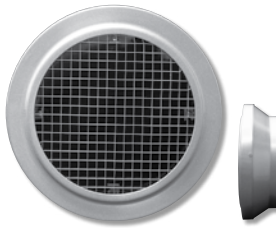
- Aluminum Construction
- Round ½"x½"x½" Egg-crate Grille
- For Use in Surface Mount Applications
- Concealed Mounting System Standard
- Standard Finish: Silver Metallic

REGC5RD: Round Egg-crate with Round Duct Adaptor



- Aluminum Construction
- Round ½"x½"x½" Egg-crate Grille
- For Use in Exposed Duct Mount Applications
- Frame Slides Cleanly Over End of Exposed Duct
- Standard Finish: Silver Metallic

REGC5RR: Round Egg-crate with Round Duct Reducer



- Aluminum Construction
- Round ½"x½"x½" Egg-crate Grille
- For Use in Exposed Duct Mount Applications
- Frame Slides Cleanly Into End of Exposed Duct
- Standard Finish: Silver Metallic

RADIAFLO™: Flush Face Radial Diffuser



- Aluminum (5RF) or Stainless Steel (9RF) Construction
- Flush Face, Draft Free, High Volume, Low Velocity Radial Diffuser
- Available with Backpan (5RFHF/9RFHF) that Includes a Knife Edge for Gel Seal HEPA Filter (By Others)
- Lay-in and Surface Mount Options Available
- 2-way Deflection (180° Air Pattern); 1-way Deflection (90° Air Pattern)
- Panel Sizes: 24"x24" and 48"x24"
- Standard Finish: British White (5RF) or Mill (9RF)

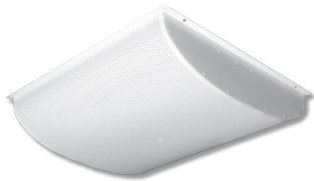
TAD, TADSS, & TADBACKPAN: Total Air Diffuser



- Aluminum (TAD) or Stainless Steel (TADSS) Construction
- Draft Free, High Volume, Low Velocity Radial Diffuser
- Lay-in and Surface Mount Options Available
- 2-way Deflection (180° Air Pattern); 1-way Deflection (90° Air Pattern)
- Panel Sizes: 24"x24", 48"x24", and (48"x12" - 1-way Deflection Only)
- Standard Finish: British White (TAD) or Mill (TADSS)
- Optional: Backpan (TADBACKPAN)

Critical Room Solutions

TADHF & TADSSHF: Total Air Diffuser with HEPA Filter Capability



- Aluminum (TADHF) or Stainless Steel (TADSSHF) Construction
- Draft Free, High Volume, Low Velocity Radial Diffuser
- Backpan Includes a Knife Edge for Gel Seal HEPA Filter (By Others)
- Surface Mount Only
- 2-way Deflection (180° Air Pattern); 1-way Deflection (90° Air Pattern)
- Panel Sizes: 24"x24" and 48"x24"
- Standard Finish: British White (TADHF) or Mill (TADSSHF)

STERILFLO®: Operating Room Particulate Control System



- 100% Type 304 Stainless Steel Construction
- Perimeter Air Curtain with Center Panels (Optimum Configuration)
- Radius Corners
- Custom Layouts
- Design Specific Drawings
- 1/4-Turn Fasteners for Ease of Cleaning
- Tested During Actual Surgical Procedures
- Class I Microbiological Clean Air Certification
- Optional: Factory Certifications

STERILFLEX™: Modular Operating Room Particulate Control System



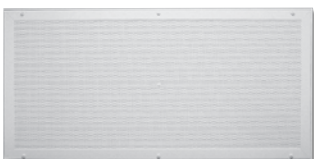
- Aluminum Construction
- Best-in-Class Performance with a Modular Design
- Integra-Grid Ceiling Frame Insures a Fast, Accurate Installation
- Compatible with Sheetrock & T-bar Ceiling Types
- Left, Center, and Right Side Plenum Inlet Location
- Top Centered Plenum Inlet Location Optional
- Lay-in Faces
- Seismic Resistance
- Optional: Integrated KleanAire UVC Technology

5000: Laminar Flow Panel



- Steel, Aluminum, or Stainless Steel Construction (18 Gage Frame, 20 Gage Backpan, and 22 Gage Perforated Face and Baffle)
- Single Face Panel Construction: 12"x48", 12"x60", 12"x72", 24"x24", 24"x48", 24"x60", and 36"x48"
- Double Face Panel Construction: 24"x72", 36"x60", and 36"x72"
- Quick-open Fasteners and Hanger Tabs
- Safety Wires (4) Included for Each Perforated Face Panel
- Lay-in and Surface Mount Options Available
- Standard Finish: British White

5000HF: Laminar Flow Panel with HEPA Filter Capability



- Aluminum or Stainless Steel Construction
- For Use with Gel Seal HEPA Filter (By Others)
- Quick-open Fasteners Allow Room-side Access to HEPA Filter
- Panel Sizes: 24"x24" and 48"x24"
- Lay-in and Surface Mount Options Available
- Standard Finish: British White

Critical Room Solutions & Displacement Ventilation

CRFF, CRFF-ARS, CRFF-E, CRFF-E-ARS: Fan Filter Units with HEPA Filter



- Aluminum Construction
- PSC Motor w/ Solid State Speed Controller
- High Efficiency Particulate Air (HEPA) Filter and Snap-in Prefilter
- Forward Inclined Centrifugal-Type Fan
- Walkable Plenum (Excluding Prefilter)
- Meets IEST Recommended Practices; UL Listed (120V, 277V)
- Frame: Lay-in T-Bar; Panel: 24"x24" or 24"x48"
- Optional ECM Motor and Room Side HEPA Access
- Standard Finish: Mill Aluminum

AFA: Rectangular, Low-Velocity Supply Unit



- Steel Construction
- Ideal for Wall or Ceiling Installation
- Removable Panels for Easy Cleaning
- Non-Clogging Design
- Standard Finish: White (RAL9010) Polyester Paint

AFB: Half-Round, Low-Velocity Supply Unit



- Steel Construction
- High Capacity 180° Floor Level Discharge
- Ideal for Industrial Applications
- Removable Panels for Easy Cleaning
- Non-Clogging Design
- Standard Finish: White (RAL9010) Polyester Paint

AFC: Round, Low-Velocity Supply Unit



- Steel Construction
- 360° Floor Level Discharge
- Ideal for Central Room Supply Locations
- Removable Panels for Easy Cleaning
- Non-Clogging Design
- Standard Finish: White (RAL9010) Polyester Paint

AFD: Half-Oval, Low-Velocity Supply Unit



- Steel Construction
- High Capacity 180° Floor Level Discharge
- Ideal for Theaters and Auditoriums
- Removable Panels for Easy Cleaning
- Non-Clogging Design
- Standard Finish: White (RAL9010) Polyester Paint

Displacement Ventilation & Chilled Beams

AFE: Flat Faced, Low-Velocity Supply Unit



- Steel Construction
- Flush Face Wall Installation
- Ideal for Shallow Installation Applications
- Removable Panels for Easy Cleaning
- Non-Clogging Design
- Standard Finish: White (RAL9010) Polyester Paint

AFF: Semi-circular, Low-Velocity Supply Unit



- Steel Construction
- Ideal for Shallow Installation Applications Requiring 180° Floor Level Discharge
- Removable Panels for Easy Cleaning
- Non-Clogging Design
- Standard Finish: White (RAL9010) Polyester Paint

AFP: Semi-circular, Low-Velocity Supply Unit



- Steel Construction
- High Capacity 180° Floor Level Discharge
- Ideal for Commercial Retail or Restaurant Installations
- Removable Panels for Easy Cleaning
- Non-Clogging Design
- Standard Finish: White (RAL9010) Polyester Paint

AFQ: Corner Round, Low-Velocity Supply Unit



- Steel Construction
- 90° Floor Level Discharge for Corner Applications
- Removable Panels for Easy Cleaning
- Non-Clogging Design
- Standard Finish: White (RAL9010) Polyester Paint

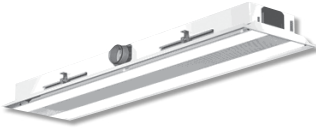
ADC: Adaptable / Adjustable Active Recessed Chilled Beam



- Steel Construction
- Ideal for Open Space Offices
- VAV Damper for Sustainable Solutions
- Compatible with 24" on Center Grid Systems
- Adjustable Velocity Control (HVC)
- Standard Finish: White (RAL9010) Polyester Paint

Chilled Beams

AHC: Adaptable / Adjustable Active Recessed Chilled Beam



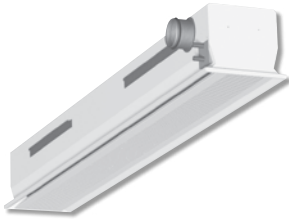
- Steel Construction
- Ideal for High Capacity Applications
- VAV Damper for Sustainable Solutions
- Compatible with 24" on Center Grid Systems
- Adjustable Velocity Control (HVC)
- Standard Finish: White (RAL9010) Polyester Paint

ABC: Active Chilled Beam, Recessed, 24" Nominal Grid Installation



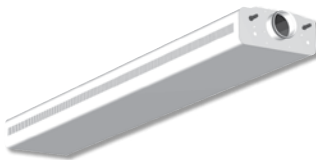
- Steel Construction
- Standard Cooling and/or Heating
- Provides Enhanced Life-Cycle Performance through Low Water and Airflow Rates
- Compatible with 24" on Center Grid Systems
- Adjustable Velocity Control (HVC)
- Standard Finish: White (RAL9010) Polyester Paint

ABD: Active Chilled Beam, Recessed, 12" Nominal Grid Installation



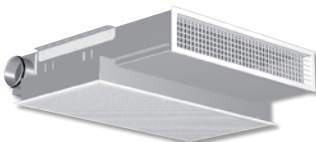
- Steel Construction
- Compatible with 12" on Center Grid Systems
- Combined Cooling and/or Heating
- Adjustable Velocity Control (HVC)
- Standard Finish: White (RAL9010) Polyester Paint

ACE: Active Chilled Beam, Exposed Installation



- Steel Construction
- Exposed, Architecturally Friendly Installation
- VAV Damper for Sustainable Solutions
- Compatible with 24" on Center Grid Systems
- Adjustable Velocity Control (HVC)
- Standard Finish: White (RAL9010) Polyester Paint

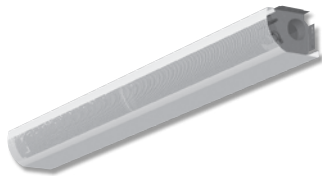
AHH: Active Chilled Beam, Bulkhead Installation



- Steel Construction
- Ideal for Hotel Guest and Other Resident Rooms
- Bulkhead Installation
- Adjustable Velocity Control (HVC)
- Low Sound Levels
- Standard Finish: White (RAL9010) Polyester Paint

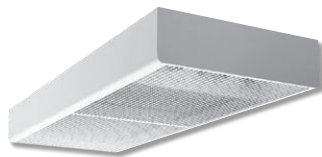
Chilled Beams & Supply Grilles/Registers

ABH: Active Chilled Beam, Exposed Wall Installation



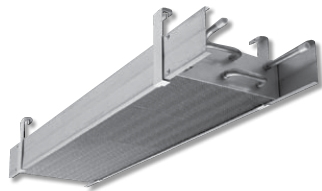
- Steel Construction
- Ideal for Hotel Guest and Other Resident Rooms
- Exposed, Architecturally Friendly Installation
- Standard Finish: White (RAL9010) Polyester Paint

APA: Passive Chilled Beam, Exposed Installation



- Steel Construction
- Passive Operation
- Installation Flush or Below Ceiling
- No Moving Parts
- Standard Finish: White (RAL9010) Polyester Paint

APT: Passive Chilled Beam, Open Grid or Perforated Ceiling Installation



- Steel Construction
- Passive Operation
- Ideal for Installation Above Open Ceiling Grids
- No Moving Parts
- Standard Finish: Mill

180, 5180, 180M, & 5180M: Curved Blade, Multi-Deflection Grilles



- Steel (180/180M) or Aluminum (5180/5180M) Construction
- Individually Adjustable Blades
- 1, 2, 2C, 3, 3C, and 4-way Discharge Air Patterns
- Maximum Size: 36"x36"
- Available with Multi-louver, Gang Operated Damper (180M/5180M)
- Standard Finish: British White

80, 580, & 585: Single Deflection Supply Grilles



- Steel (80) or Aluminum (580/585) Construction
- Individually Adjustable Horizontal or Vertical Front Blades
- Blades Spaced on $\frac{3}{4}$ " (80/580) or $\frac{1}{2}$ " (585) Centers
- Sizes: 6"x4" to 96"x96"
- Standard Finish: British White

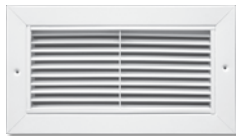
Supply Grilles/Registers

880, 5880, & 5885: Double Deflection Supply Grilles



- Steel (880) or Aluminum (5880/5885) Construction
- Individually Adjustable Horizontal and Vertical Blades
- Blade Spacing on $\frac{3}{4}$ " (880/5880) or $\frac{1}{2}$ " (5885) Centers
- Sizes: 6"x4" to 96"x96"
- Standard Finish: British White

480: Heavy Duty Single Deflection Supply Grille



- Steel Construction (14 Gage Blades and 18 Gage Frame)
- Adjustable Horizontal or Vertical Front Blades
- Blade Spacing on $\frac{1}{2}$ " Centers
- Sizes: 6"x4" to 96"x96"
- Standard Finish: British White

4880: Heavy Duty Double Deflection Supply Grille



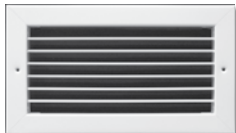
- Steel Construction (14 Gage Front Blades and 18 Gage Frame)
- Individually Adjustable Horizontal and Vertical Blades
- Front Blade Spacing on $\frac{1}{2}$ " Centers; Rear Blade Spacing on $\frac{3}{4}$ " Centers
- Sizes: 6"x4" to 96"x96"
- Standard Finish: British White

800 & 5800: Single Deflection Supply Registers with Gang-Operated Damper



- Steel (800) or Aluminum (5800) Construction
- Individually Adjustable Horizontal or Vertical Front Blades
- Gang-operated Rear Blades
- Blade Spacing on $\frac{3}{4}$ " Centers
- Maximum Size: 48"x36"
- Standard Finish: British White

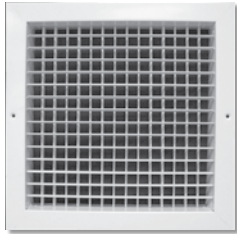
AF80 & AF580: Single Deflection Airfoil Supply Grilles



- Steel (AF80) or Aluminum (AF580) Frame
- Extruded Aluminum, Airfoil Shaped, Adjustable Blades
- Horizontal or Vertical Blades
- $\frac{3}{4}$ " Blade Spacing
- Standard Finish: British White
- Optional: Steel or Aluminum OBD and Plaster Frame

Supply & Return Grilles/Registers

AF880 & AF5880: Double Deflection Airfoil Supply Grilles



- Steel (AF880) or Aluminum (AF5880) Frame
- Extruded Aluminum, Airfoil Shaped, Adjustable Blades
- Individually Adjustable Horizontal and Vertical Blades
- 3/4" Blade Spacing
- Standard Finish: British White
- Optional: Steel or Aluminum OBD and Plaster Frame

5815: Removable Reversible Core Supply Grille



- Aluminum Construction with Steel Core Clips
- Provides Several Degrees of Deflection (5° Up, 5° Down, 15° Up, or 15° Down)
- Fixed Horizontal Front Blades on 1/4" Centers
- Adjustable Vertical Rear Blades on 1" Centers
- Maximum Size: 72"x36"
- Standard Finish: British White

5810: Removable Reversible Core Return Grille



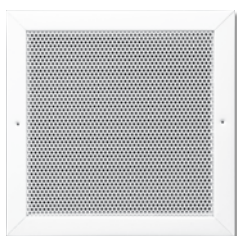
- Aluminum Construction with Steel Core Clips
- Provides Several Degrees of Deflection (5° Up, 5° Down, 15° Up, or 15° Down)
- Fixed Horizontal Front Blades on 1/4" Centers
- Maximum Size: 48"x48"
- Standard Finish: British White
- Optional: Core Only (Maximum Size: 72"x24")

S80, S580, S85, & S585: Stationary Blade Return Grilles



- Steel (S80/S85) or Aluminum (S580/S585) Construction
- Horizontal or Vertical Blades Fixed on 3/4" (S80/S580) or 1/2" (S85/S585) Centers
- Blades Set at 35° or 0° Deflection
- Sizes: 6"x4" to 96"x96"
- Standard Finish: British White
- Optional: 1" or 2" Filter Frame

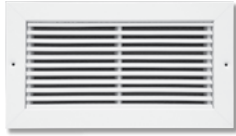
S80P & S580P: Perforated Return Grilles



- Steel (S80P) Construction Sizes: 6"x4" to 48"x36"
- Aluminum (S580P) Construction Sizes: 6"x4" to 48"x48"
- 51% Open Area Perforated Face
- Standard Finish: British White
- Optional: 1" or 2" Filter Frame

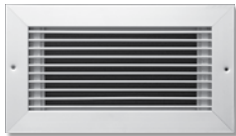
Return Grilles/Registers

S480: Heavy Duty Steel Return Grille



- Steel Construction (14 Gage Blades and 16 Gage Frame)
- Stationary Horizontal or Vertical Blades
- Blade Spacing on $\frac{1}{2}$ " Centers (38° Angle) or $\frac{3}{8}$ " Centers (0° Angle)
- Blades Set at 0° or 38° Angle
- Sizes: 6"x4" to 96"x96"
- Standard Finish: British White
- Optional: 1" Filter Frame (24"x24" Maximum Size)

S5480: Heavy Duty Aluminum Return Grille



- Extruded Aluminum Construction (.11" Thick Blades and .06" Thick Frame)
- Stationary Horizontal or Vertical Blades
- Blade Spacing on $\frac{1}{2}$ " Centers
- Blades Set at 0° or 30° Angle
- Sizes: 6"x4" to 96"x96"
- Support Mullions Included for Units Larger Than 12" (9" Maximum Spacing)
- Standard Finish: Clear Anodize
- Optional: Heavy Duty Extruded Aluminum Damper (S5480OBD)

AFCS80 & AFCS85: Curved Blade Return Grilles



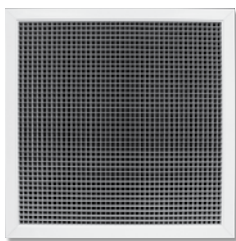
- Steel Construction
- $\frac{3}{4}$ " Blade Spacing with 45° Deflection (AFCS80) or $\frac{1}{2}$ " Blade Spacing with 30° Deflection (AFCS85)
- Horizontal or Vertical Front Blades
- Standard Finish: British White
- Optional: Steel or Aluminum OBD, Plaster Frame, Filter Frame, Insect Screen, and Debris Screen

AFS580 & AFS585: Fixed Blade Return Grilles



- Extruded Aluminum Construction
- $\frac{3}{4}$ " Blade Spacing (AFS580) or $\frac{1}{2}$ " Blade Spacing (AFS585)
- 0° or 45° Deflection
- Horizontal or Vertical Front Blades
- Standard Finish: British White
- Optional: Steel or Aluminum OBD, Plaster Frame, Filter Frame, Insect Screen, and Debris Screen

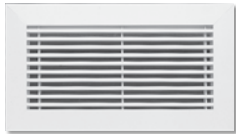
EG & EGC Series: Egg-crate Return Grilles



- Aluminum Core Construction
- Aluminum or Steel Frame Construction
- Sizes: 4"x4" to 96"x96"
- Maximum Single Section Size: 48"x48"
- Core Dimensions: $\frac{1}{2}$ "x $\frac{1}{2}$ "x $\frac{1}{2}$ " (EG5/EGC5), 1"x1"x1" (EG10/EGC10), or $\frac{1}{2}$ "x $\frac{1}{2}$ "x1" (EG15/EGC15)
- Panel Sizes: 12"x12", 24"x12", 24"x24", 48"x12", and 48"x24"
- Available with Hard Metric Lay-in Panel 600x600mm (MEGC5/MEGC10)
- Standard Finish: British White

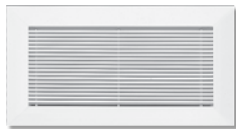
Return & Linear Bar Grilles/Registers

1500: Supply/Return Linear Bar Grille



- Extruded Aluminum Construction
- Bars (7/32" Thick) on 1/2" or 7/16" (Pencil Proof) Centers
- Bars Set at 0°, 15°, or 30° (Pencil Proof Only) Deflection
- Maximum Single Section Length: 72"; Can Be Joined for Continuous Runs
- Support Bars (9" Maximum Spacing)
- Standard Finish: British White
- Optional: Access Doors, Mitered Corners, and Curving

1600: Supply/Return Linear Bar Grille



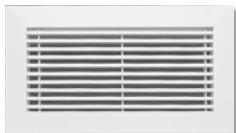
- Extruded Aluminum Construction
- Bars (1/8" Thick) on 1/4" or 1/2" Centers
- Bars Set at 0° or 15° Deflection
- Maximum Single Section Length: 72"; Can Be Joined for Continuous Runs
- Support Bars (9" Maximum Spacing)
- Standard Finish: British White
- Optional: Access Doors, Mitered Corners, and Curving

1700: Linear Louver Grille



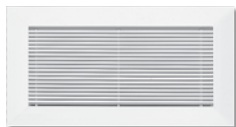
- Extruded Aluminum Construction
- Removable Core
- Width (1701): 3 1/2" - 12 1/2" in 3/4" Increments
- Width (1702): 6 1/2" - 12 1/2" in 1 1/2" Increments
- Maximum Single Section Length: 72"; Can Be Joined for Continuous Runs
- Standard Finish: British White
- Optional: Mitered Corners

1800: Linear Bar Floor Grille



- Extruded Aluminum Construction
- Removable Core
- Bars (7/32" Thick) on 1/2" or 7/16" (Pencil Proof) Centers
- Bars Set at 0°, 15°, or 30° (Pencil Proof Only) Deflection
- Maximum Single Section Length: 72"; Can Be Joined for Continuous Runs
- Support Bars (6" Maximum Spacing)
- Standard Finish: Alumican
- Optional: Mitered Corners and Curving

1850: Linear Bar Floor Grille



- Extruded Aluminum Construction
- Removable Core
- Bars (1/8" Thick) on 1/4" or 1/2" Centers
- Bars Set at 0° or 15° Deflection
- Maximum Single Section Length: 72"; Can Be Joined for Continuous Runs
- Support Bars (6" Maximum Spacing)
- Standard Finish: Alumican
- Optional: Mitered Corners and Curving

Security Grilles/Registers

1310, 1310TF, & 51310: Perforated Security Grilles



- Aluminum, 1/8" Thick (51310) or Steel, 3/16" Thick (1310/1310TF) Construction
- Secondary Face Plate for Transfer Grille Available (1310TF)
- 5/16" Diameter Holes on 7/16" Staggered Centers
- Sleeve Length: 6", 8", 10", 12", and 18" (Stitch Welded)
- Width: 6" - 30"; Height: 4" - 30"
- Maximum Size: 30"x30"
- Available with Rear or Front Operated OBD
- Standard Finish: British White
- Optional: Angled Frame, Anchor Bars, Round Security Bars, and Two Loose Angles

13SD: Perforated Security Grille



- Steel, 3/16" Thick, All Welded Construction
- 3/16" Diameter Holes on 9/32" Staggered Centers
- Sleeve Length: 6", 8", 10", 12", and 18"
- Width: 6" - 30"; Height: 4" - 30"
- Maximum Size: 30"x30"
- Available with Rear Operated OBD
- Standard Finish: British White
- Optional: Angled Frame, Anchor Bars, or Round Security Bars

1320: Lattice Face Security Grille



- Steel, 3/16" Thick Construction
- Square Holes (2"x2") with a 1" Fret Face Pattern
- Wire Mesh (10 Gage, #2 Wire) Inserted Between Face Plate and Backer Plate
- Sleeve Length: 6", 8", 10", 12", and 18" (Stitch Welded)
- Width: 6" - 30"; Height: 4" - 30"
- Maximum Size: 30"x30"
- Available with Rear or Front Operated Steel OBD
- Standard Finish: British White
- Optional: Angled Frame, Anchor Bars, Round Security Bars, and Two Loose Angles

1330: Louvered Face Security Grille



- Steel Construction (16 Gage Frame and 14 Gage Blades)
- Stationary Horizontal Blades Set at 40°
- Wire Mesh (10 Gage, #2 Wire) Inserted Between Mullion and Mesh Guard
- Sleeve Length: 6", 8", 10", 12", and 18" (Stitch Welded)
- Width: 6" - 30"; Height: 4" - 30"
- Maximum Size: 30"x30"
- Available with Front or Rear Operated Steel OBD
- Standard Finish: British White
- Optional: Angle Frame, Anchor Bars, Round Security Bars, and Two Loose Angles

1340: Lattice Face Diffuser with Louvered Core



- Steel Construction (12 Gage Lattice Face Plate)
- Lattice Face Plate Features 13/16" Square Holes and 3/16" Fret
- Surface Mount Louvered Face Diffuser is Factory Set for 1, 2, 3, or 4-way Air Pattern
- Width: 6" - 24"; Height: 6" - 24" (3" Increments)
- Standard Finish: British White
- Optional: Duct Mounted OBD

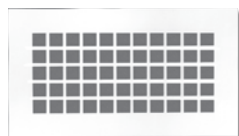
Security Grilles/Registers

51350: Aluminum Supply/Return Security Grille



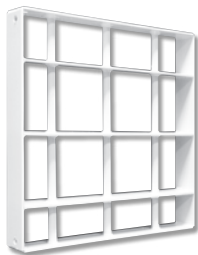
- Aluminum Construction
- Bars (3/16"x3/4") Set at 0° Deflection; Bar Spacing Set on 1/2" Centers
- Tube (5/16" Diameter) Expanded to Lock Blades in Place; Reinforced Full Length by a 1/4" Diameter Rod
- Sleeve Length: 6", 8", 10", 12", and 18" (Stitch Welded)
- Width: 6" - 30"; Height: 4" - 30"; Maximum Size: 30"x30"
- Available with Rear or Front Operated Aluminum OBD Pop-riveted in Sleeve
- Standard Finish: British White
- Optional: Angle Frame, Anchor Bars, Round Security Bars, and Two Loose Angles

1380 & 51380: Lattice or Perforated Face Plate



- 12 Gage Steel Construction (1380L/1380P) or 1/8" Thick Aluminum Construction (51380L/51380P)
- 13/16" Square Holes with 3/16" Fret (1380L/51380L)
- 5/16" Diameter Holes on 7/16" Staggered Centers (1380P/51380P)
- Sized to Lay on Face of Krueger Grilles and Registers
- Standard Finish: British White
- Optional: Straight and Counter Sunk Screw Holes (3/16" Diameter), Steel or Aluminum Plaster Frame, and Front Operated OBD

1390: Barred Duct Work



- Vertical or Horizontal Round Security Bar (3/4" Diameter) and Flat Security Bar (2 1/2"x1/4")
- Width: 6" - 30"; Height 4" - 30"
- Maximum Size: 30"x30"
- Frame Size: 2 1/2"x1/4"
- Standard Finish: British White

1390F: Barred Duct Work with Sleeve



- Horizontal and Vertical Round Security Bars (3/4" Diameter)
- Width: 6" - 30"; Height: 4" - 30"
- Maximum Size: 30"x30"
- Sleeve Length: 6", 8", 10", 12", and 18" (Stitch Welded)
- Two Loose Angle Frames Included
- Standard Finish: British White

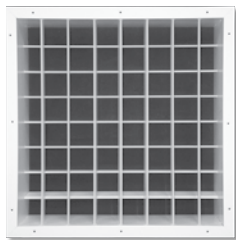
680: Industrial Single Deflection Supply Grille



- Steel Frame Construction
- Adjustable Horizontal or Vertical Front Airfoil Blades (Extruded Aluminum Construction)
- 1 1/4" or 2" Blade Spacing; Minimum Size: 6"x6"; Maximum Single Section Size: 48"x48"
- 3" Blade Spacing; Minimum Size: 12"x12"; Maximum Single Section Size: 48"x48"
- Heavy-duty Steel Damper (OBDHD) Easily Adjusted Through Face
- Standard Finish: British White

Industrial & Duct Mounted Grilles/Registers

6880: Industrial Double Deflection Supply Grille



- Steel Frame Construction
- Adjustable Horizontal and Vertical Airfoil Blades (Extruded Aluminum Construction)
- 1 1/4" or 2" Blade Spacing; Minimum Size: 6"x6"; Maximum Single Section Size: 48"x48"
- 3" Blade Spacing; Minimum Size: 12"x12"; Maximum Single Section Size: 48"x48"
- Heavy-duty Steel Damper (OBDHD) Easily Adjusted Through Face
- Standard Finish: British White

680MP: Industrial Pole Operated Multi-Louver



- 20 Gage Steel Frame Construction
- Adjustable Horizontal or Vertical Front Airfoil Blades (Extruded Aluminum Construction)
- 3/4" Blade Spacing; Minimum Size: 10"x6"; Maximum Single Section Size: 40"x36"
- Rear Pole Operated, Multi-louver Steel Blades
- Standard Finish: British White

DPL & DPL2: Drum Punkah Louver



- Aluminum Construction
- Rotating Drum with Adjustable Deflection Vanes (DPL)
- Rotating Drum with Adjustable Split Deflection Vanes (DPL2)
- Rotating Drum Permits 60° Angular Adjustment
- Heavy Duty Steel Damper (DOBHD) Easily Adjusted Through Face
- Standard Finish: British White or Alumican

DMD: Duct Mounted Drum Louver



- Heavy Gage Aluminum Construction
- 2" Louver Vane Spacing
- Mounts Directly to Spiral or Round Duct
- Easy Finger Tip Adjustment
- Foam Gasket to Seal Unit to Duct
- Standard Finish: Silver Metallic
- Optional: Damper/Extractor

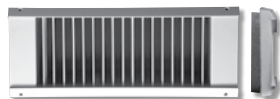
DMGSR, DMGDR, & DMGPR: Duct Mounted Supply Grilles with Radius End Cap



- Aluminum Construction
- Radius End Caps Match Curvature of Round Duct
- Individually Adjustable Horizontal or Vertical Blades (DMGSR)
- Individually Adjustable Horizontal and Vertical Blades (DMGDR)
- Blades Spaced on 3/4" Centers (DMGDR/DMGSR)
- 63% Open Area Perforated Face (DMGPR)
- Sizes: 10"x3" to 36"x12" or 48"x10"
- Duct Diameter: 6" - 36" (Depending on Grille Height)
- Standard Finish: British White or Clear Anodize

Duct Mounted, Transfer, & Stainless Steel Grilles/Registers

DMGSU, DMGDU, & DMGPU: Duct Mounted Supply Grilles with Universal End Cap



- Aluminum Construction
- Foam Gasket End Caps Compress to Curvature of Round Duct
- Individually Adjustable Horizontal or Vertical Blades (DMGSU)
- Individually Adjustable Horizontal and Vertical Blades (DMGDU)
- Blades Spaced on $\frac{3}{4}$ " Centers (DMGDU/DMGSU)
- 63% Open Area Perforated Face (DMGPU)
- Sizes: 10"x3" to 48"x10"
- Duct Diameter: 6" - 36" (Depending on Grille Height)
- Standard Finish: British White or Clear Anodize

600, 600A, 600C, 5600, & 5600A: Sight-Proof Door Grilles



- Steel (600/600A/600C) or Aluminum (5600/5600A) Construction
- V-shaped Deflection Vanes Set on $\frac{1}{2}$ " Centers
- Frame Styles: Single Core with Flat Frame (600/5600), Single Core with Flat Frame and Auxiliary Frame (600A/5600A), Single Core with Channel Frame (600C)
- Minimum Size: 6"x4"; Maximum Size: 30"x30"
- Standard Finish: British White

980: Stainless Steel Single Deflection Supply Grille



- 304 Stainless Steel Construction (Optional 316 Stainless Steel Construction)
- Individually Adjustable Horizontal or Vertical Front Blades
- Blades Spaced on $\frac{3}{4}$ " Centers
- Sizes: 4"x4" to 48"x60"
- Standard Finish: Satin Polish
- Optional: Damper (9OBD), Plaster Frame (9PF), and Square to Round Adapter (9SRA)

9880: Stainless Steel Double Deflection Supply Grille



- 304 Stainless Steel Construction (Optional 316 Stainless Steel Construction)
- Individually Adjustable Horizontal and Vertical Blades
- Blades Spaced on $\frac{3}{4}$ " Centers
- Sizes: 4"x4" to 48"x48"
- Standard Finish: Satin Polish
- Optional: Damper (9OBD), Plaster Frame (9PF), and Square to Round Adapter (9SRA)

9S80, 9S80HF, 9S80P, & 9S84P: Stainless Steel Single Deflection Supply Grilles



- 304 Stainless Steel Construction (Optional 316 Stainless Steel Construction)
- Blades Set at 45° or 0° Deflection
- Horizontal or Vertical Blades Fixed on $\frac{3}{4}$ " (9S80/9S80HF) Centers
- Sizes: 4"x6" to 48"x48" (9S80HF - Hinged Face); 4"x4" to 48"x60" (9S80/9S80P/9S84P)
- Perforated Face Available (9S80P/9S84P)
- Air Pattern Deflector (9S84P) and Filter Clips (9S80HF) Available
- Standard Finish: Satin Polish
- Optional: Damper (9OBD), Plaster Frame (9PF), and Square to Round Adapter (9SRA)

Stainless Steel Grilles/Registers

9700, 9700A, & 9700D: Stainless Steel Sight-Proof Door Grilles



- 304 Stainless Steel Construction (Optional 316 Stainless Steel Construction)
- Z-shaped Deflecting Vanes Set on 1" Centers
- Frame Styles: Single Core with Flat Frame (9700), Single Core with Flat Frame and Auxiliary Frame (9700A), Double Core with Flat Frame (9700D)
- Sizes: 4"x4" to 48"x60"
- Standard Finish: Satin Polish

91240: Fixed Core Diffuser



- 304 Stainless Steel Construction (Optional 316 Stainless Steel Construction)
- Cores are Welded at Factory for 1, 2, 3, or 4-way Discharge Air Patterns
- Sizes 4"x4" to 48"x60" Available
- Standard Finish: Satin Polish
- Optional: Damper (9OBD), Plaster Frame (9PF), and Square to Round Adapter (9SRA)

91610, 91620, & 91520: Heavy Duty Stainless Steel Bar Grilles



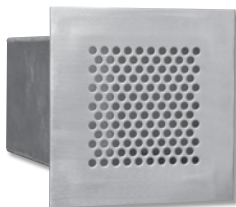
- 304 Stainless Steel Construction (Optional 316 Stainless Steel Construction)
- Bars are $\frac{1}{8}$ " Thick with $\frac{3}{8}$ " Spacing; Set at 15° or 0° Deflection (91610)
- Bars are $\frac{1}{8}$ " Thick with $\frac{1}{2}$ " Spacing; Set at 15° or 0° Deflection (91620)
- Bars are $\frac{1}{4}$ " Thick with $\frac{1}{2}$ " Spacing; Set at 0° Deflection (91520)
- Maximum Size: 60"x24"
- Standard Finish: Satin Polish
- Optional: No Screw Holes, Countersunk Screw Holes with #6x1 $\frac{1}{4}$ " Stainless Steel Screws, Damper (9OBD), and Adjustable Straightening Grid (9SSG)

9180: Curved Blade, Multi-Deflection Stainless Steel Diffuser



- 304 Stainless Steel Construction (Optional 316 Stainless Steel Construction)
- Individually Adjustable Curved Blades
- Several Discharge Air Patterns Available
- Standard Finish: Satin Polish
- Optional: No Screw Holes, Countersunk Screw Holes with #6x1 $\frac{1}{4}$ " Stainless Steel Screws, Damper (9OBD), and Square to Round Adapter (9SRA)

91310: Perforated, Stainless Steel Security Grille



- 304 Stainless Steel Construction (Optional 316 Stainless Steel Construction)
- 5/16" Diameter Holes on 7/16" Staggered Centers
- $\frac{1}{8}$ " Continuously Welded Seams
- Sizes: 6"x4" to 30"x30" in 2" Increments and 9"x9"
- Lengths: 6", 8", 10", and 12"
- Standard Finish: Satin Polish (Face)
- Optional: Front and Rear Welded Damper (93F/93R), Security Bar Grid, Angle Frame, and Anchor Bars

Stainless Steel Grilles/Registers

9EGC5: Stainless Steel Egg-crate Grille



- 304 Stainless Steel Construction (Optional 316 Stainless Steel Construction)
- Core Dimensions: 1/2"x1/2"x1/2"
- Standard Finish: Satin Polish (Face)
- Optional: No Screw Holes, Countersunk Screw Holes with #6x1 1/4" Stainless Steel Screws, Damper (9OBD), and Square to Round Adapter (9SRA)

About Product Finishes

Introduction

Krueger has a broad range of liquid and powder paint solutions available, as well as custom color matching to meet the needs of most air distribution applications. Additionally, we offer standard and custom color aluminum anodizing for customers that may require the aesthetics and surface characteristics that these finishes offer.

Applied in our state-of-the-art paint facilities, Krueger product finishes take full advantage of the most current, cutting-edge technology available. From standard paint finishes, custom color matching, antimicrobial powder paint coatings, and aluminum anodizing, Krueger has a product finish that is right for you.

About Standard Liquid Paint

Description

Krueger's standard paint selections use an anodic electrocoating process. This process produces a durable, thorough, controllable, corrosion-resistant finish on all products. The finish may be used as a primer, facilitating easy field painting, if desired, to match the installation.

Method of Application

After assembly, products are washed, rinsed, pretreated with zirconium phosphate, sealed, and then rinsed again. They are then suspended from an anodic hook and dipped into a high performance electrocoating tank. Following electrocoating, products are force dried and baked in a forced air oven at a peak temperature of 350°F until cured.

About Standard Powder Paint

Description

Krueger's powder paint coatings are aesthetically pleasing, provide excellent physical and chemical resistance properties, and produce a durable uniform finish. Additionally, they are antiseptically manufactured to meet the increasingly stringent requirements of the commercial, industrial, healthcare and laboratory markets, and are used exclusively on Krueger's world-class critical environment diffusers.

Method of Application

After assembly, products go through a multi-staged wash and pretreat system, are oven dried, then coated with 2.5 to 3.5 mils of powder paint. The products then move through an oven and are baked at a temperature of 425°F until fully cured.

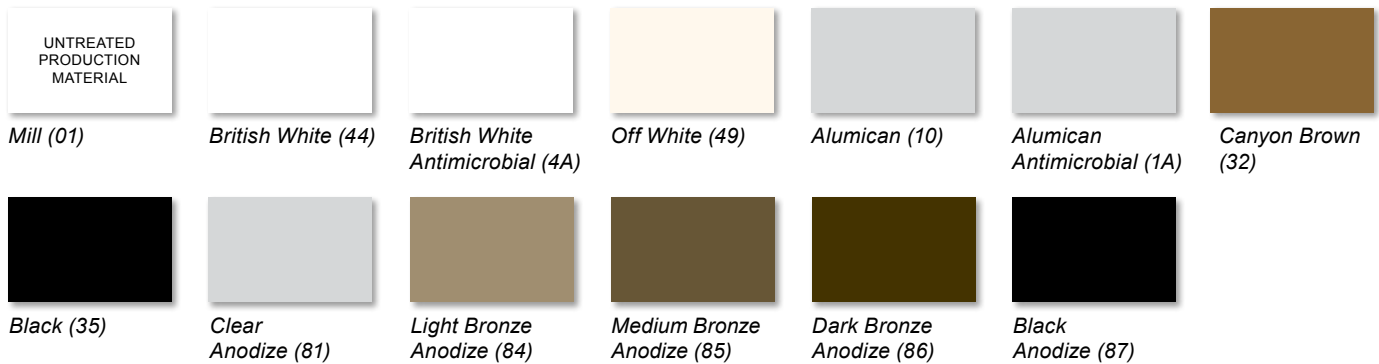
Antimicrobial Powder Coat

Krueger's antimicrobial powder coat paints help reduce the undesirable effects of odors and stains caused by bacteria, mold, mildew, and fungi on the coating. They also resist fingerprints and smudges; staying cleaner between scheduled routine maintenance. When cleaning is necessary, they can be wiped down with a mild soap and water solution.

Antimicrobials within the paint decrease microbial growth by disrupting the microorganisms when they make contact with the surface. A short period of time after contact, the bacteria levels begin to reduce down to unmeasurable levels*. Even better, these coatings are environmentally friendly and are considered to be RoHS and REACH-compliant solutions.

***DISCLAIMER:** This product is formulated with antimicrobials to help suppress the growth of odor and stain-causing microorganisms on the coating. It is not intended as a substitute for good hygiene or to prevent foodborne or infectious illnesses.

Standard Color Selection



Film Properties

PROPERTY	TEST METHOD	STANDARD E-COAT VALUE	STANDARD POWDER COAT VALUE	ANTIMICROBIAL POWDER COAT VALUE
Film Thickness	N/A	0.8 - 1.0 mils	2.0 - 3.0 mils	2.0 - 3.0 mils
Gloss: 60-degrees	ASTM D523-89	50 - 85%	60 - 70%	55 - 65%
Pencil Hardness	ASTM D3363-92A	HB - H	H - 2H	H - 2H
Crosshatch Adhesion	ASTM D3359-83	Crosshatch 4B - 5B	5B	5B
Impact	ASTM D2794-93	Direct: >100 in/lb Reverse: >80 in/lb	N/A	N/A
Salt Spray	ASTM B117-9048	96 Hours	1000 Hours	1000 Hours
Humidity	ASTM D2247-92	> 500 Hours	1000 Hours	1000 Hours
Water Soak	ASTM D870-92	250 Hours	N/A	N/A
Conical Mandrel	ASTM D522	N/A	1/8" Conical Bend No Cracking Shows	1/8" Conical Bend No Cracking Shows

★ All finish types shown are not available with all products. Please see Krueger's Product Catalog or website for available finishes.

❗ Standard options are Mill or British White. For other paint selections or paint matching, setup fees may apply.
 All colors shown serve as a guide only. Please contact your local Krueger Representative for an actual sample.

About Prism Appliqué Colors

Prism Appliqué Specifications

The intended use for the appliqué is on the Krueger Prism ceiling diffuser. The appliqué consists of a matte substrate with an adhesive backing and are individually die cut for precision and consistency. They are then fitted to a pre-formed square embossment in the center of the faceplate with the purpose of providing color. The appliqué is applied after the diffuser is painted. Appliqué specifications include: 0.017" Polycarbonate substrate with opacity film; 0.002" adhesive with peel-off backing; and 0.019" total thickness.

❗ All colors shown serve as a guide only.
 Please contact your local Krueger Representative for an actual sample.





For 24-hour access, visit
WWW.KRUEGER-HVAC.COM

Provided by:

Learn More About Other Krueger Air Distribution Solutions

Terminal Units

Bypass & Retrofit
Dual Duct
Single Duct
Fan Powered

Raised Floor

Raised Floor Diffusers
Raised Floor Terminal Units

Diffusers

Air Nozzles
Critical Room Solutions
Linear Slot Diffusers
Louvered Diffusers
Plaque & Architectural
Plenum Slot
Round

Grilles & Registers

Duct Mounted
Industrial
Linear Bar
Return
Security
Stainless Steel
Supply
Transfer

Displacement Ventilation

Chilled Beams

Accessories & Dampers

Engineering Information

Krueger continues to lead the industry in the development of innovative products and air distribution solutions. To learn more about what we can do for you, contact your local Krueger representative or visit us on the web at www.krueger-hvac.com.



Provider of Air Distribution Solutions

GRILLES :: REGISTERS :: DIFFUSERS :: TERMINAL UNITS

Krueger Headquarters | 1401 N. Plano Rd. | Richardson, TX 75081 | Tel: 972.680.9136 | Fax: 972.497.0450

www.krueger-hvac.com | kruegerinfo@krueger-hvac.com



ISO 9001:2008 Certified

PRODUCT HANDBOOK | 1/2010
©Krueger 2010. All Rights Reserved.



Supporting Sustainable
Green Building Design